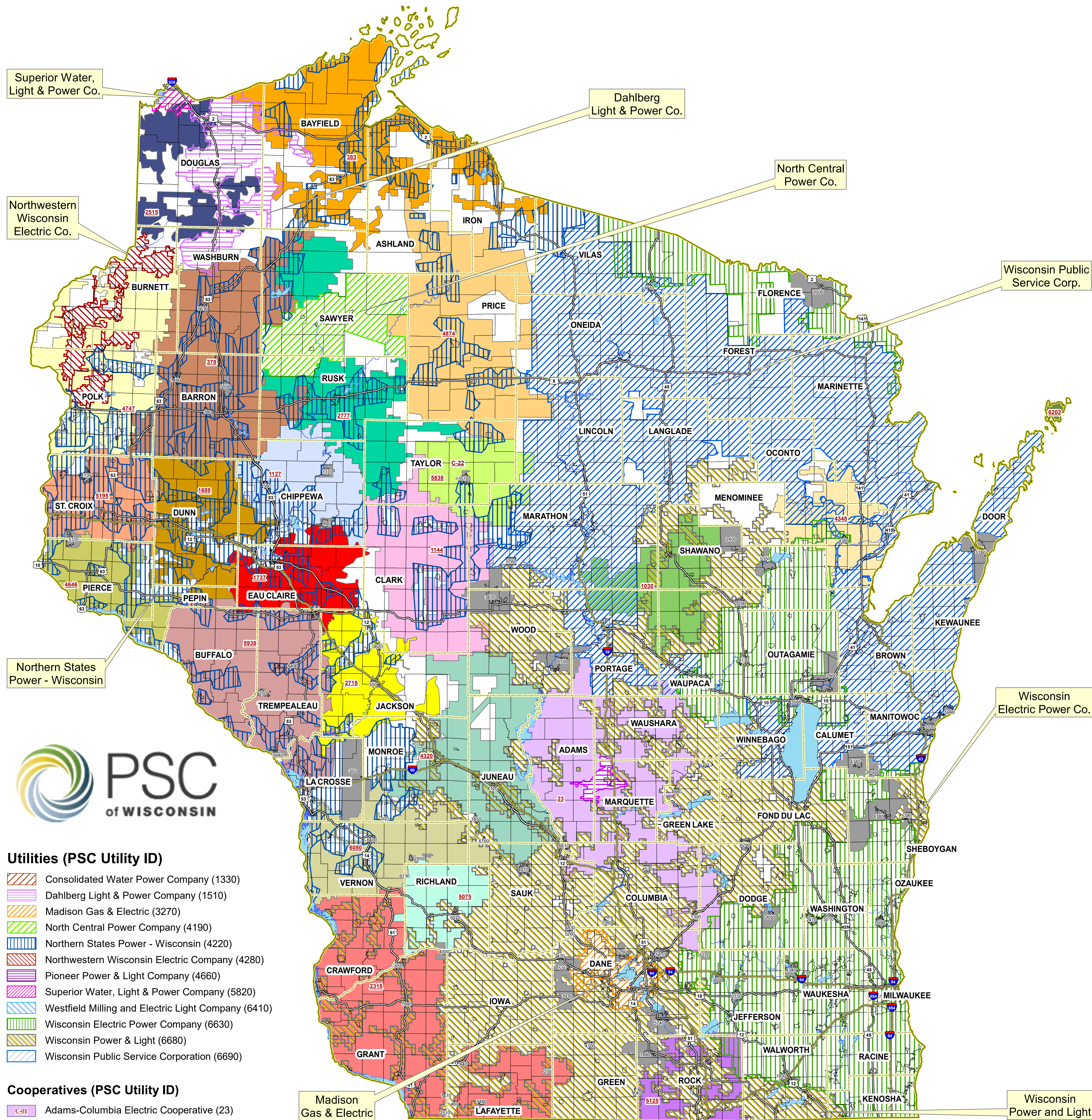


Wisconsin Electric Service Territories



Utilities (PSC Utility ID)

- Consolidated Water Power Company (1330)
- Dahlberg Light & Power Company (1510)
- Madison Gas & Electric (3270)
- North Central Power Company (4190)
- Northern States Power - Wisconsin (4220)
- Northwestern Wisconsin Electric Company (4280)
- Pioneer Power & Light Company (4660)
- Superior Water, Light & Power Company (5820)
- Westfield Milling and Electric Light Company (6410)
- Wisconsin Electric Power Company (6630)
- Wisconsin Power & Light (6680)
- Wisconsin Public Service Corporation (6690)

Cooperatives (PSC Utility ID)

- C-01 Adams-Columbia Electric Cooperative (23)
- C-02 Barron Electric Cooperative (378)
- C-03 Bayfield Electric Cooperative (383)
- C-04 Central Wisconsin Electric Cooperative (1030)
- C-05 Chippewa Valley Electric Cooperative (1127)
- C-06 Clark Electric Cooperative (1144)
- C-07 Dunn Energy Cooperative (1688)
- C-08 East Central Energy (2515)
- C-09 Eau Claire Energy Cooperative (1737)
- C-10 Jackson Electric Cooperative (2718)
- C-11 Jump River Electric Cooperative (2777)
- C-12 Oakdale Electric Cooperative (4320)
- C-13 Oconto Electric Cooperative (4348)
- C-14 Pierce Pepin Cooperative Services (4646)
- C-15 Polk-Burnett Electric Cooperative (4747)
- C-16 Price Electric Cooperative (4874)
- C-17 Richland Electric Cooperative (5075)
- C-18 Riverland Energy Cooperative (5938)
- C-19 Rock Energy Cooperative (5125)
- C-20 Scenic Rivers Energy Cooperative (2318)
- C-21 St. Croix Electric Cooperative (5195)
- C-22 Taylor Electric Cooperative (5838)
- C-23 Vernon Electric Cooperative (6080)
- C-24 Washington Island Electric Cooperative, Inc. (6202)

Municipal Electric Utilities (PSC Utility ID)

- Algoma Utility Commission (50)
Arcadia Electric & Water Utility (210)
Argyle Municipal Electric & Water Utility (230)
Bangor Municipal Utility (350)
Barron Light and Water Utility (380)
Belmont Municipal Water & Electric Utility (440)
Benton Municipal Electric & Water Utility (460)
Black Earth Electric Utility (530)
Black River Falls Municipal Electric & Water (550)
Bloomer City of Electric Utility (580)
Boscobel Municipal Utilities (650)
Brodhead Water & Light Commission (740)
Cadott Light & Water Municipal Utility (890)
Cashton Municipal Electric & Water Utility (970)
Cedarburg Light & Water Commission (1000)
Clintonville Water & Electric Utility (1200)
Columbus Water & Light Department (1300)
Cornell Municipal Water & Electric Utility (1370)
Cuba City Electric & Water Utility (1470)
Cumberland Municipal Utility (1490)
Eagle River Light & Water Commission (1710)
Elkhorn Light & Water (1800)
Elroy Municipal Electric & Water Utility (1850)
Evansville City of Water & Light (1880)
Fennimore Water & Light Plant (1980)
Florence Utility Commission (2000)
Gresham Municipal Light & Power Utility (2400)
Hartford City of Utilities (2470)
Hazel Green Municipal Utility (2510)
Hustisford Utilities (2650)
Jefferson Water & Electric Department (2750)
Juneau Utility Commission (2790)
Kaukauna Utilities (2800)
Kiel City of Utilities (2850)
La Farge Municipal Electric Utility (2950)
Lake Mills Light & Water Department (3000)
Lodi Municipal Light & Water Utility (3160)
Manitowoc Public Utilities (3320)
Marshfield Utilities (3420)
Mazomanie Electric Utility (3470)
Medford Electric Utility (3510)
Menasha Electric & Water Utilities (3560)
Merrillan Municipal Electric & Water Utility (3620)
Mount Horeb Electric Utility (3930)
Muscodia Light & Water Utility (4000)
New Glarus Light & Water Works (4100)
New Holstein Public Utility (4110)
New Lisbon Municipal Electric & Water Department (4120)
New London Electric & Water Utility (4130)
New Richmond City Utilities (4139)
Oconomowoc City of Utilities (4340)
Oconto Falls Water & Light Commission (4360)
Pardeeville Village of Electric Utility (4530)
Plymouth Utilities (4740)
Prairie du Sac Municipal Electric & Water (4830)
Princeton Municipal Water & Electric Utilities (4880)
Reedsburg Utility Commission (4970)
Rice Lake Municipal Water & Electric Utilities (5050)
Richland Center Electric Utility (5070)
River Falls Municipal Utility (5110)
Sauk City Municipal Water & Light Utility (5260)
Shawano Municipal Utilities (5350)
Sheboygan Falls Utilities (5380)
Shullsburg Electric Utility (5460)
Slinger Utilities (5510)
Spooner Municipal Utilities (5630)
Stoughton Electric Utility (5740)
Stratford Municipal Water & Electric Utility (5760)
Sturgeon Bay Utilities (5780)
Sun Prairie Utilities (5810)
Trempealeau Municipal Electric & Water Utility (5940)
Two Rivers Water & Light Utility (5990)
Viola Municipal Water & Electric Utility (6130)
Waterloo Water & Light Commission (6220)
Waunakee Water & Light Commission (6260)
Waupun Public Utilities (6290)
Westby City of Municipal Electric & Water Utility (6400)
Whitehall Municipal Electric Utility (6490)
Wisconsin Dells Municipal Electric Utility (6610)
Wisconsin Rapids Water Works & Lighting Commission (6700)
Wonewoc Electric & Water Utility (6760)